

Domain Model (Dynamic)

Section description: Provide a brief description of specific area covered in the domain model.

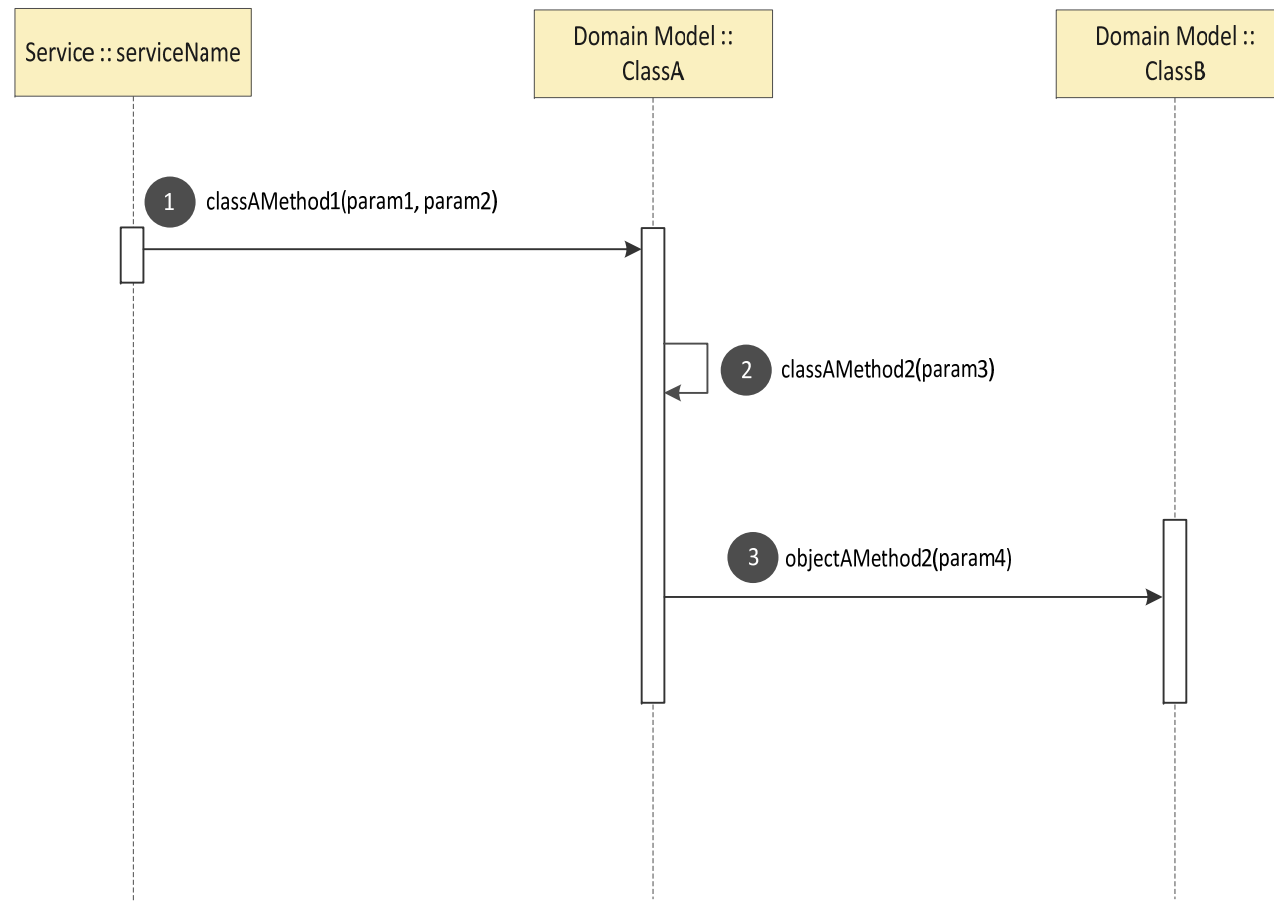
Domain Sub-section

If you are describing a specific part of a broader domain, provide the information on the sub-section here. For instance, if you are building a domain model for the banking industry, a possible sub-section can be "Accounts", where the relationship Customers and Accounts are outlined.

Section name :: Page Title

page ?

Page description: Provide a brief description of what kind of information the page is presenting.



Notes

Provide an explanation of the overall interaction between the service, and objects in the domain model.

1 classAMethod1(param1, param2)

Describe the interaction here

2 classAMethod2(param3)

Describe the interaction here

3 classAMethod2(param4)

Describe the interaction here

Note: This page provides all the necessary elements to illustrate dynamic behavior within a domain, and not a domain model itself.

This template uses the Calibri font.

The page setup of this template:

Page Size: A3, Page Layout: Landscape

Download either the free Microsoft Powerpoint 2007 Viewer or the Microsoft Office Compatibility pack to obtain the Calibri font.

